

Welcoming Circle at La Raíz Park

A community-designed park focal point that invites guests to gather, share, learn, and enjoy.



thprd.org



thprd.org

About La Raíz Park

SW Baker Street and Lombard Avenue

La Raíz (*rrah-ees*) is Spanish for “the root”.

Like our communities, trees live in interdependent relationships through interconnected roots. Trees use roots to share nutrients and communicate for mutual support.

Like tree roots, our community’s shared paths forward are interconnected. Our roots – relationships, roles in history, and the paths that have led us to this land – are deeply entangled. We grow when we work together toward understanding these relationships.

About La Raíz Park

SW Baker Street and Lombard Avenue

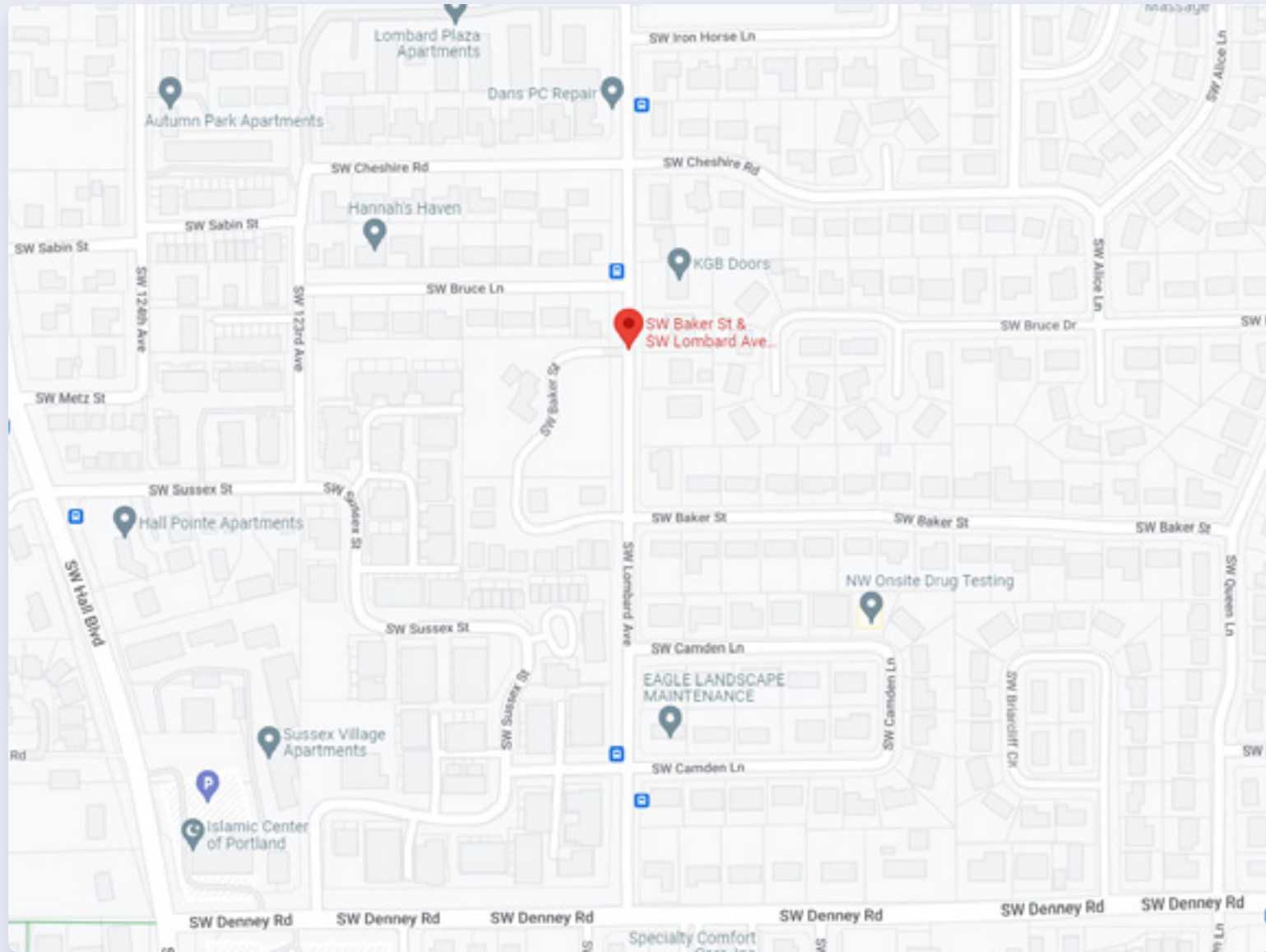
La Raíz (*rrah-ees*) Park is located within Beaverton's Vose neighborhood.

The project will develop two acres of park along the SW Lombard Avenue corridor with access to city bicycle lanes and sidewalks.

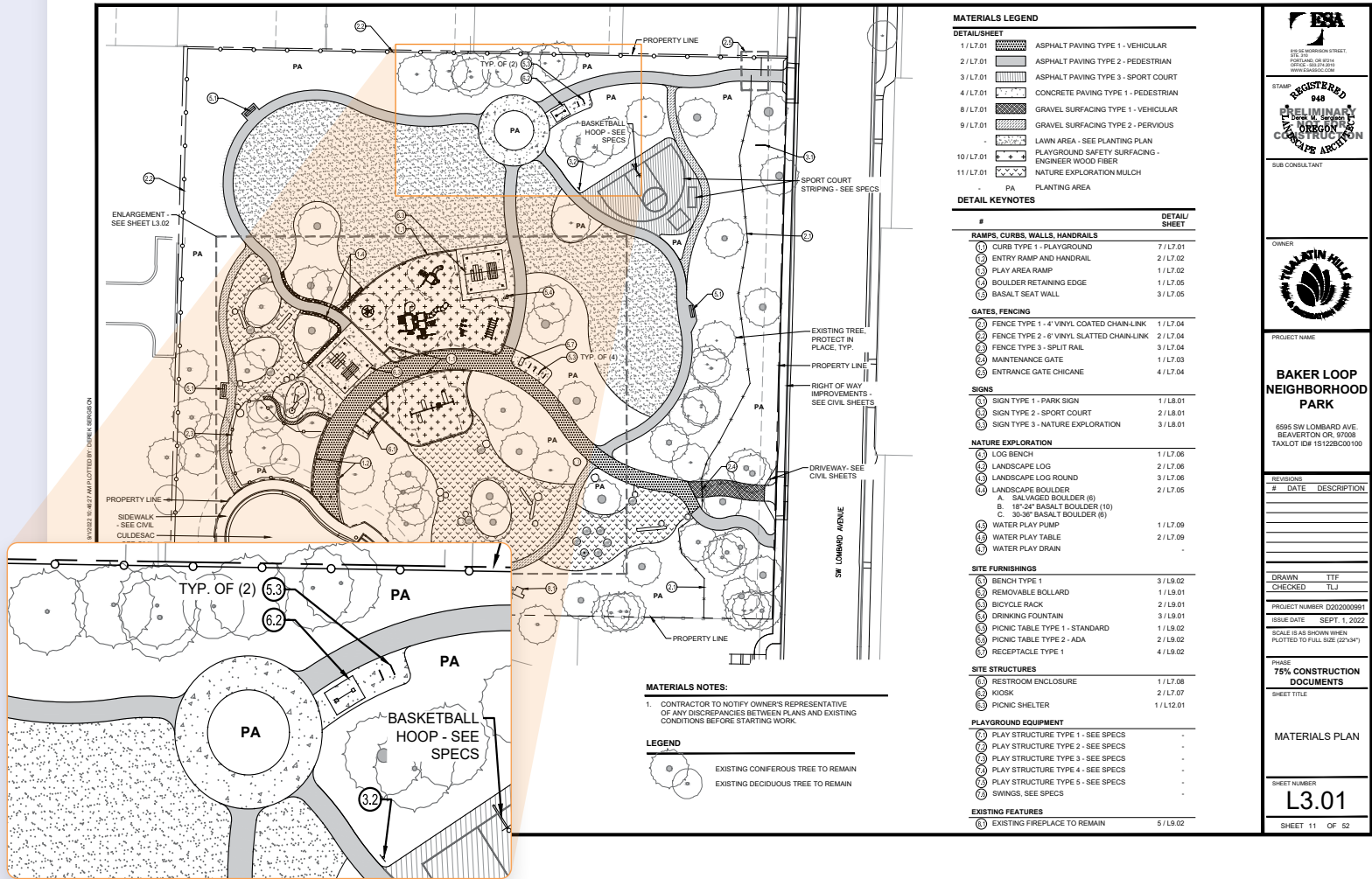
The site was a previous residence for over 80 years and features beautiful mature trees.

Through community engagement processes, THPRD has completed the overall design of the future park, which includes a welcoming circle at the north end of the park.

WELCOMING CIRCLE AT LA RAÍZ PARK



WELCOMING CIRCLE AT LA RAÍZ PARK



Designing the Welcoming Circle

Telling a story with imagery, texture, and color

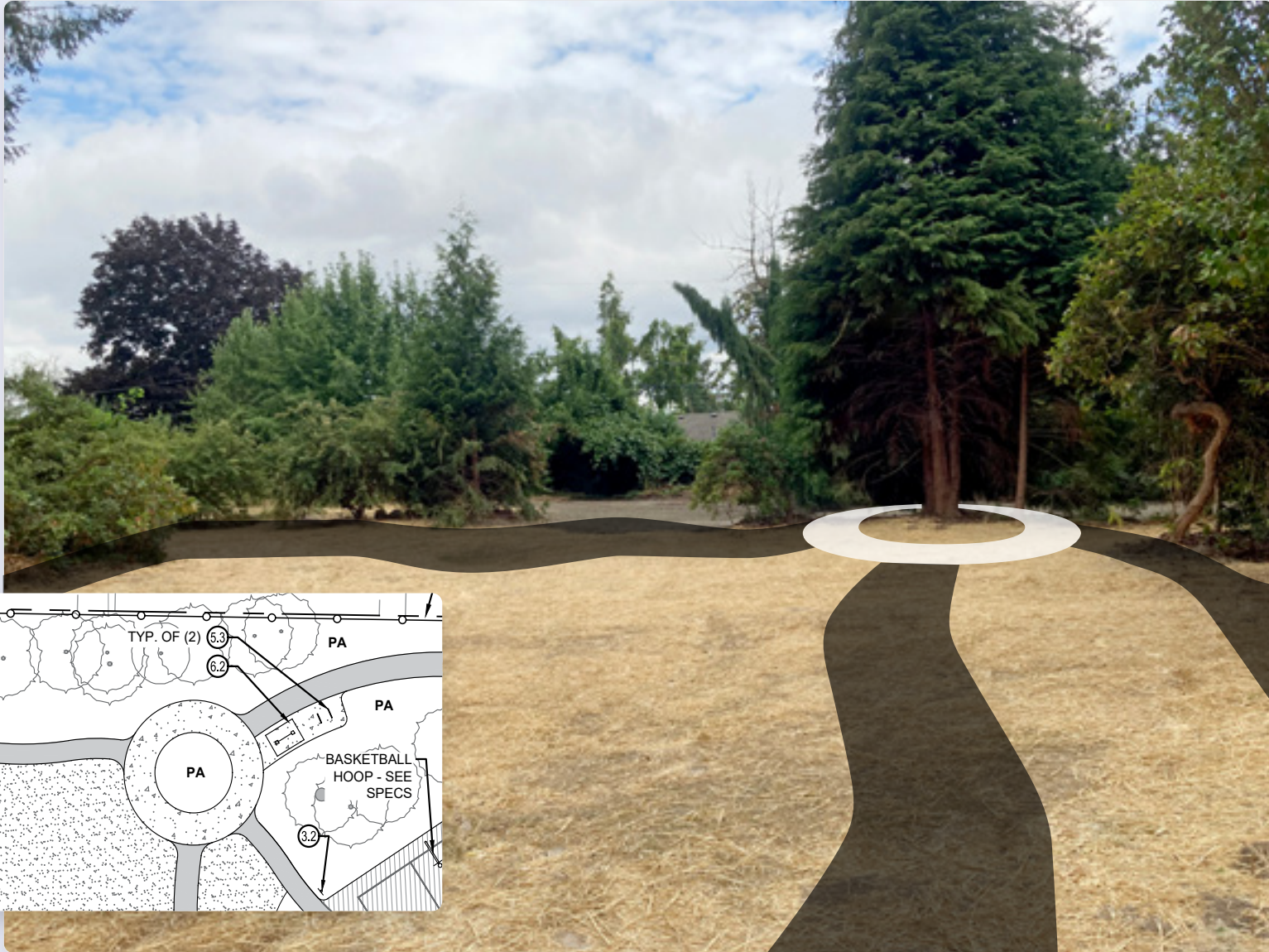
Features

- The Welcoming Circle is an 36-foot wide concrete ring with a 20-foot wide inner circle for plantings.
- Four five-foot asphalt pathways connect the Welcoming Circle to other park amenities.
- The Welcoming Circle is surrounded by tall trees, grass areas, and nearby bike rack, picnic shelter, and basketball hoops.

Goal

This project aims to create a welcoming 'artistic' installation in the concrete intersection of the park's four paved trails. The art should draw people into the space, engage, and welcome the diversity of our communities, and reflect the themes of the park based on the community's input.

WELCOMING CIRCLE AT LA RAÍZ PARK

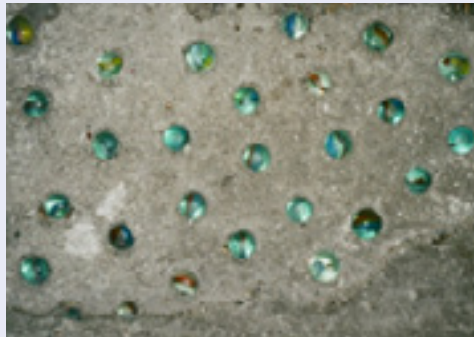


Designing the Welcoming Circle

Telling a story with imagery, texture, and color

Construction/Site Specifics

- All elements of the design must be at grade level.
- The circle will be visible upon entering from any of the four paths.
- A small native tree and low-lying plantings will be added to the center of the circle.
- The ultimate design needs to be long-lasting, maintenance friendly and vandal resistant. The design should express words or meanings in *simple* prints, embedded materials, lines, or color/type of concrete material.



Designing the Welcoming Circle

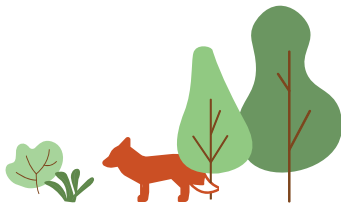
Telling a story with imagery, texture, and color

Potential Themes

As THPRD finalizes La Raíz Park, the Welcome Circle imagery and themes may also be reflected in the style of the park's amenities such as play equipment, interpretive signage, etc.

Natural Elements

Plants, animals, forests, water, and outer space



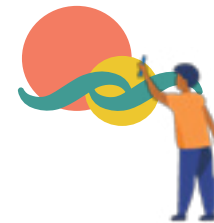
Whimsical

Whimsy, adventure, play, storytelling, and fantasy



Cultural

Connecting people across cultures and languages

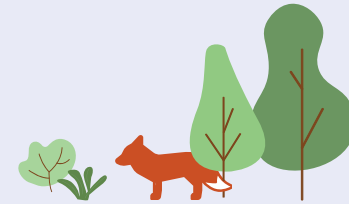


Designing the Welcoming Circle

Telling a story with imagery, texture, and color

Natural Elements

Plants, animals, forests, and space



Designing the Welcoming Circle

Telling a story with imagery, texture, and color

Whimsical

Whimsy, adventure, play, storytelling, and fantasy



Designing the Welcoming Circle

Telling a story with imagery, texture, and color

Cultural

Connecting people across cultures and languages



Marigold

Horseradish

AHOJ
iHOLA
HELLO
MERHABA
TERE
KUMUSTA
HALLO
OLA
HEJ
HALO
BONJOUR

Camas

Designing the Welcoming Circle

Telling a story with imagery, texture, and color

Available Asset

10 to 20 small basalt and granite boulders on site

- Boulders measure approximately 18 x 18 x 18 inches
- Boulders could be arranged and embedded in the concrete
- Text could be sandblasted into the boulders



Design Examples

patterns, colors, and textures for consideration



WELCOMING CIRCLE AT LA RAÍZ PARK

Design Examples

patterns, colors, and textures for consideration



WELCOMING CIRCLE AT LA RAÍZ PARK

Design Examples

patterns, colors, and textures for consideration



WELCOMING CIRCLE AT LA RAÍZ PARK

Design Examples

patterns, colors, and textures for consideration



WELCOMING CIRCLE AT LA RAÍZ PARK

Design Examples

patterns, colors, and textures for consideration



WELCOMING CIRCLE AT LA RAÍZ PARK

Design Examples

patterns, colors, and textures for consideration



WELCOMING CIRCLE AT LA RAÍZ PARK

Design Examples

patterns, colors, and textures for consideration



WELCOMING CIRCLE AT LA RAÍZ PARK

Design Examples

patterns, colors, and textures for consideration



WELCOMING CIRCLE AT LA RAÍZ PARK

Design Examples

patterns, colors, and textures for consideration



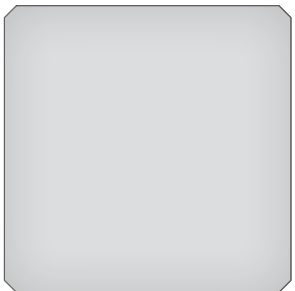
Design your own

Welcoming Circle

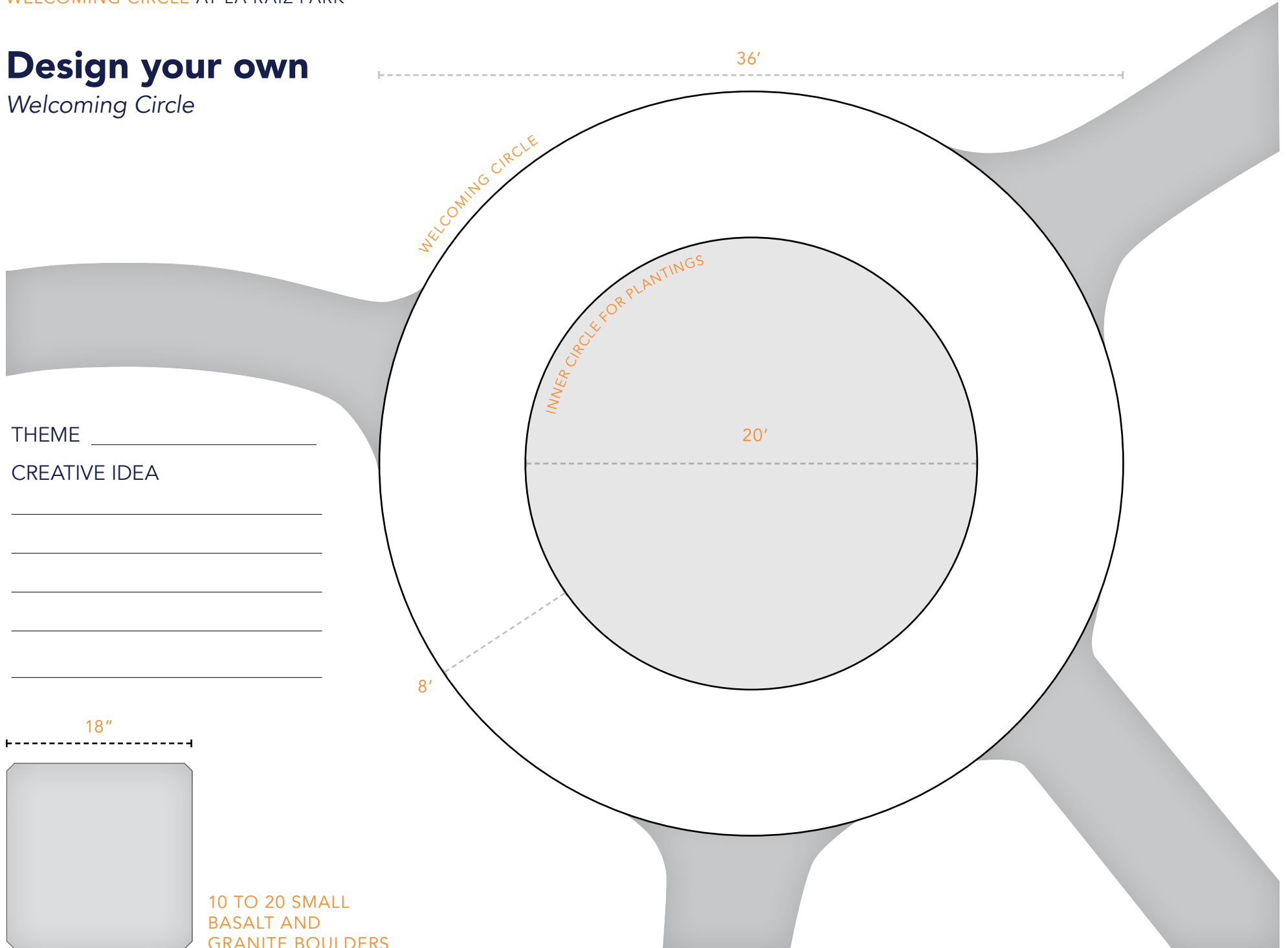
THEME _____

CREATIVE IDEA

18"



10 TO 20 SMALL
BASALT AND
GRANITE BOULDERS





thprd.org

Welcoming Circle at La Raíz Park

Sara Mayhew-Jenkins, Communications Specialist
s.mayhewjenkins@thprd.org

Liana Harden, Engagement and Partnerships Specialist
l.harden@thprd.org

Tim Bonnin, Interim Design and Development Manager
t.bonnin@thprd.org



thprd.org