

NEW PARK AT SW POINTER RD

COMMUNITY INPUT RESULTS



WHAT DID WE HEAR?

THPRD asked community members about their favorite activities and themes for the new park coming to SW Pointer Rd.

Park Activities

Community members are interested in a variety of activities for the new park.



Gathering
and picnicking with friends and family



Playing
with and for all ages



Meditating
activities, reading, yoga and stretching

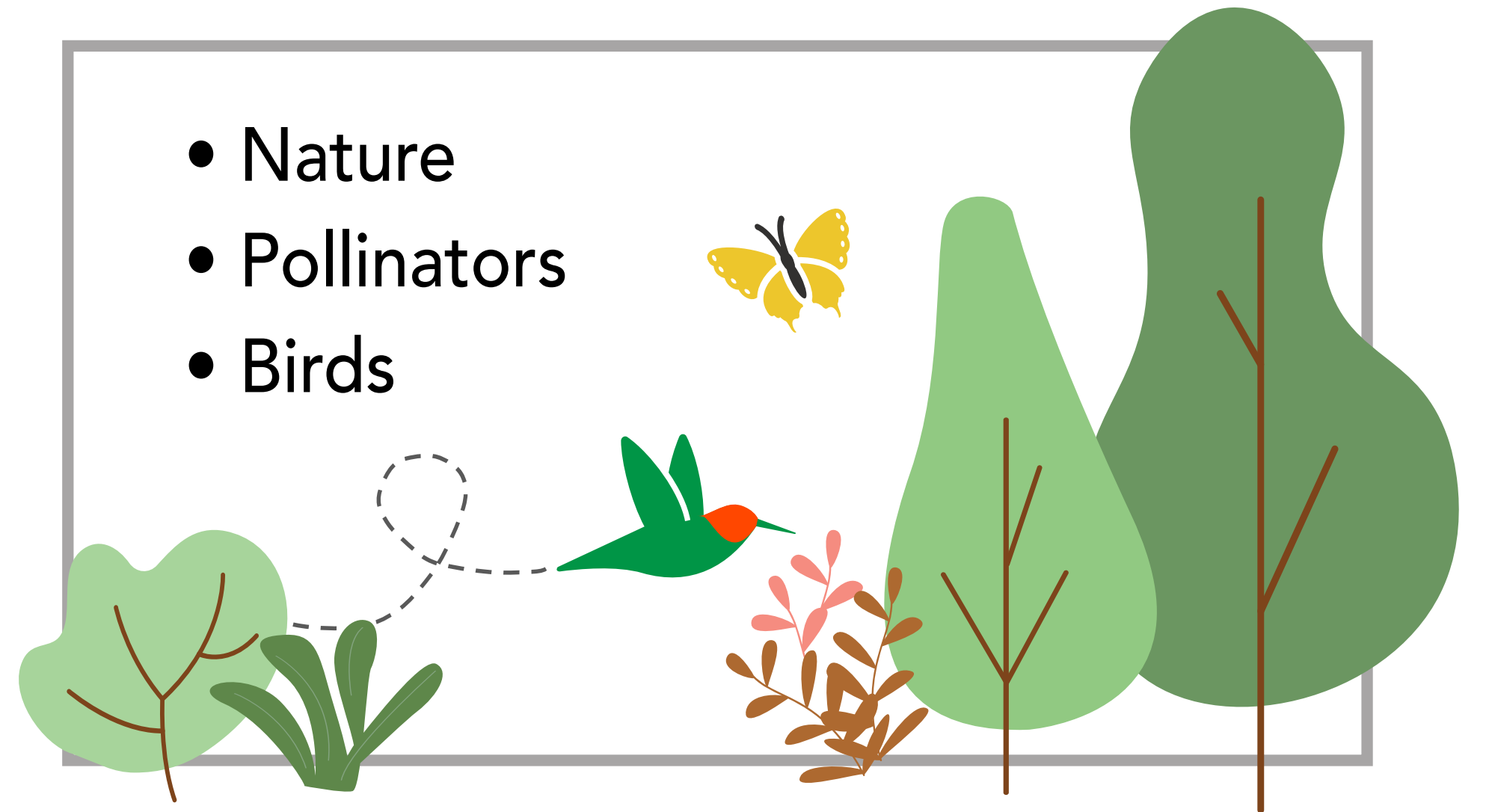


Relaxing
with places to sit and rest

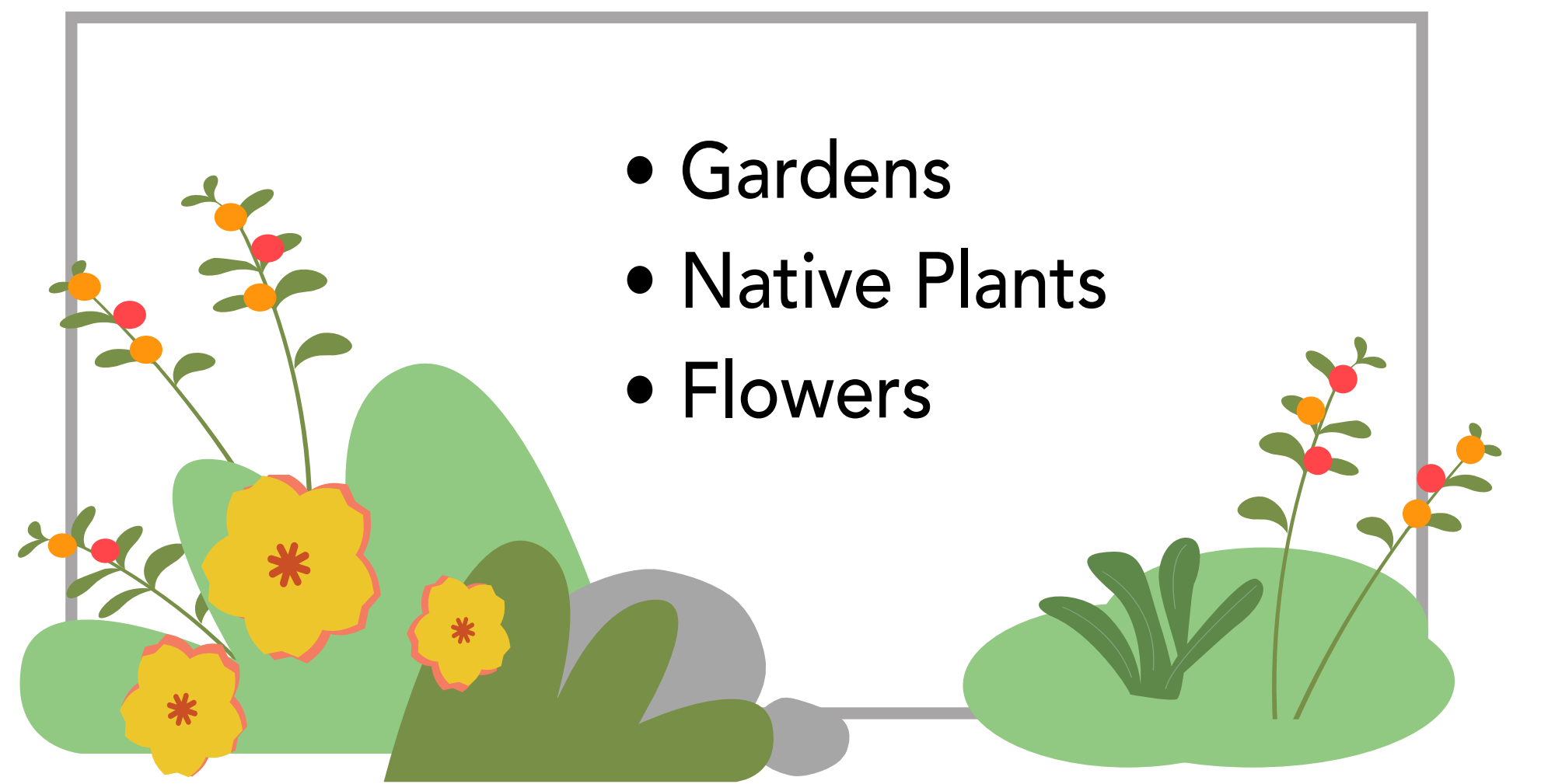
Park Themes

Community members are excited about a wide range of possible themes.

- Nature
- Pollinators
- Birds



- Gardens
- Native Plants
- Flowers

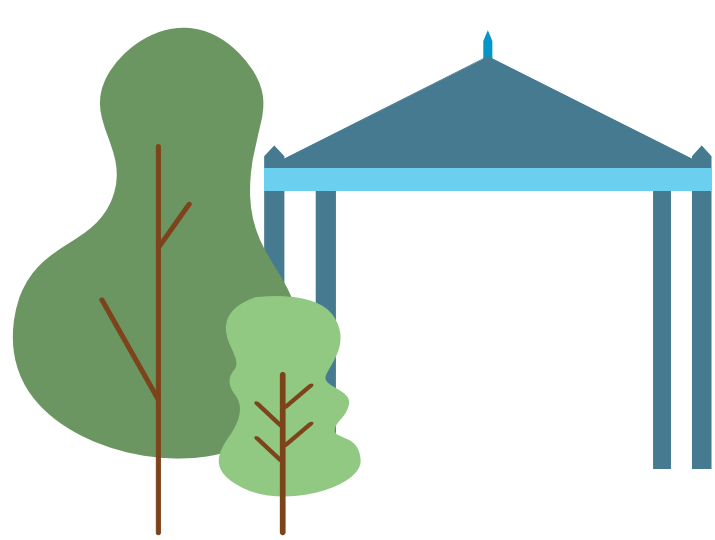


Park Spaces

Community members are interested in certain types of spaces.



Multiuse open space



Shaded space with trees or shelter



Multiuse pathways



Nature and water play spaces