



Beaverton Creek Trail Segments #3 & 4 Hocken Ave. to Westside Trail

Virtual Community Meeting ▪ May 20, 2021

THPRD Community Visioning

Led by Visioning Task Force

13

diverse community volunteers

- **Multilingual:** 7 different languages spoken
- **Multigenerational**
- **Geographically different areas of THPRD**

Different WAYS of collecting IDEAS



Translation/ Interpretation in

- Arabic
- Chinese
- English
- Korean
- Spanish
- Vietnamese



Engagement Numbers



10,500
people reached



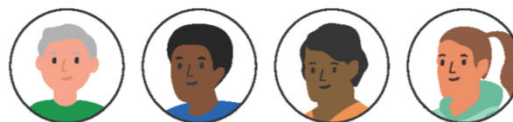
12,500
ideas collected



117
engagement opportunities

Regional Award winner

Inclusive community engagement with younger populations and historically under-represented communities



Vision Goal Areas



Welcoming and Inclusive



Play for Everyone



Accessible and Safe



Preserving Natural Spaces

Community Visioning Goal Areas

Vision Action Plan is built upon **four** overarching goal areas



Welcoming and Inclusive

Ideas centered on building community, expanding the role of THPRD in people's lives



Play for Everyone

All the ways people want to play, move, and interact with THPRD



Accessible and Safe

Overall maintenance of facilities and equipment and the ability to access THPRD amenities safely



Preserving Natural Spaces

Ideas that envision opportunities for people to be in and enjoy nature

Accessible and Safe

People said these things are important...

Make it **easier**
to get to
and find
parks &
trails



Provide a more **connected**
trail system





Preserving Natural Spaces

People said these things are important...

Maintain
**existing
trails**



Create a more
connected and varied
trail system

Equitable access to
natural areas



Vision Action Plan

Bringing community ideas to life

Using public input to inform upcoming THPRD projects

Read the **Vision Action Plan**:
www.thprd.org/district-information/visioning/



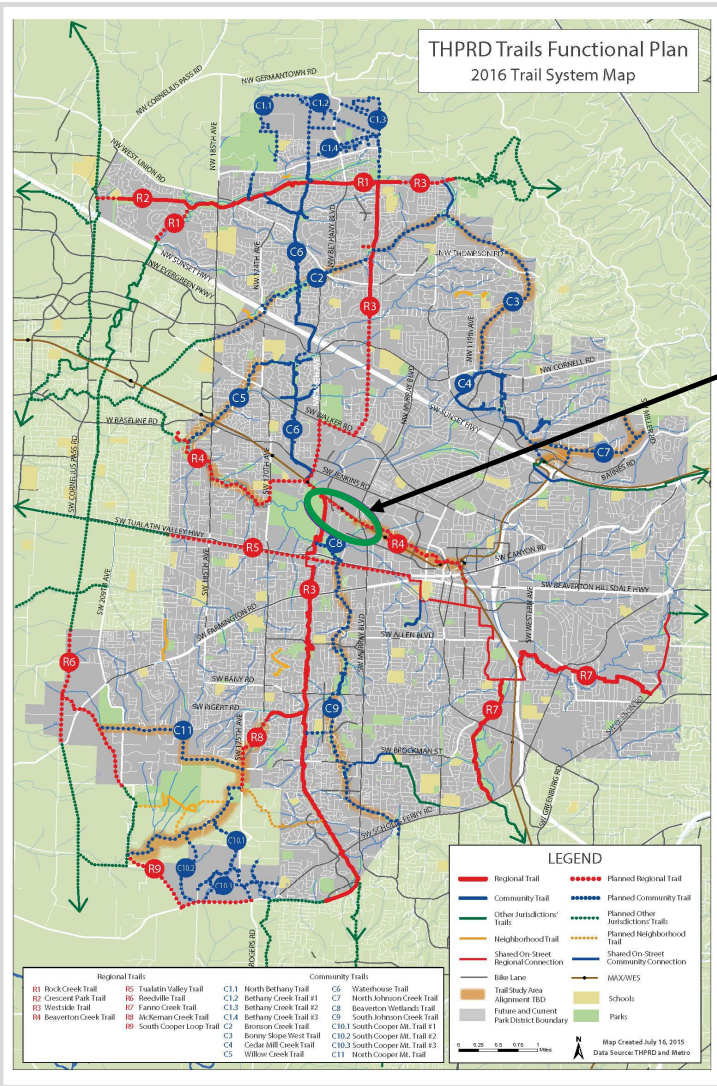
Project Description

CATEGORY:	New Regional Trail
SIZE:	1.5 miles
LOCATION:	Central Beaverton - Hocken Ave. to Westside Trail
FUNDING:	Metropolitan Transportation Improvement Program (MTIP) – Regional Flexible Funds Allocation (RFFA) THPRD Matching Funds <u>Planning Phase I and Design & Construction Phase II</u>
PLANNER:	Rene' Brucker - THPRD
CONSULTANT:	David Evans and Associates (DEA)

THPRD Trails Functional Plan
2016 Trail System Map

THPRD Trails Functional Plan

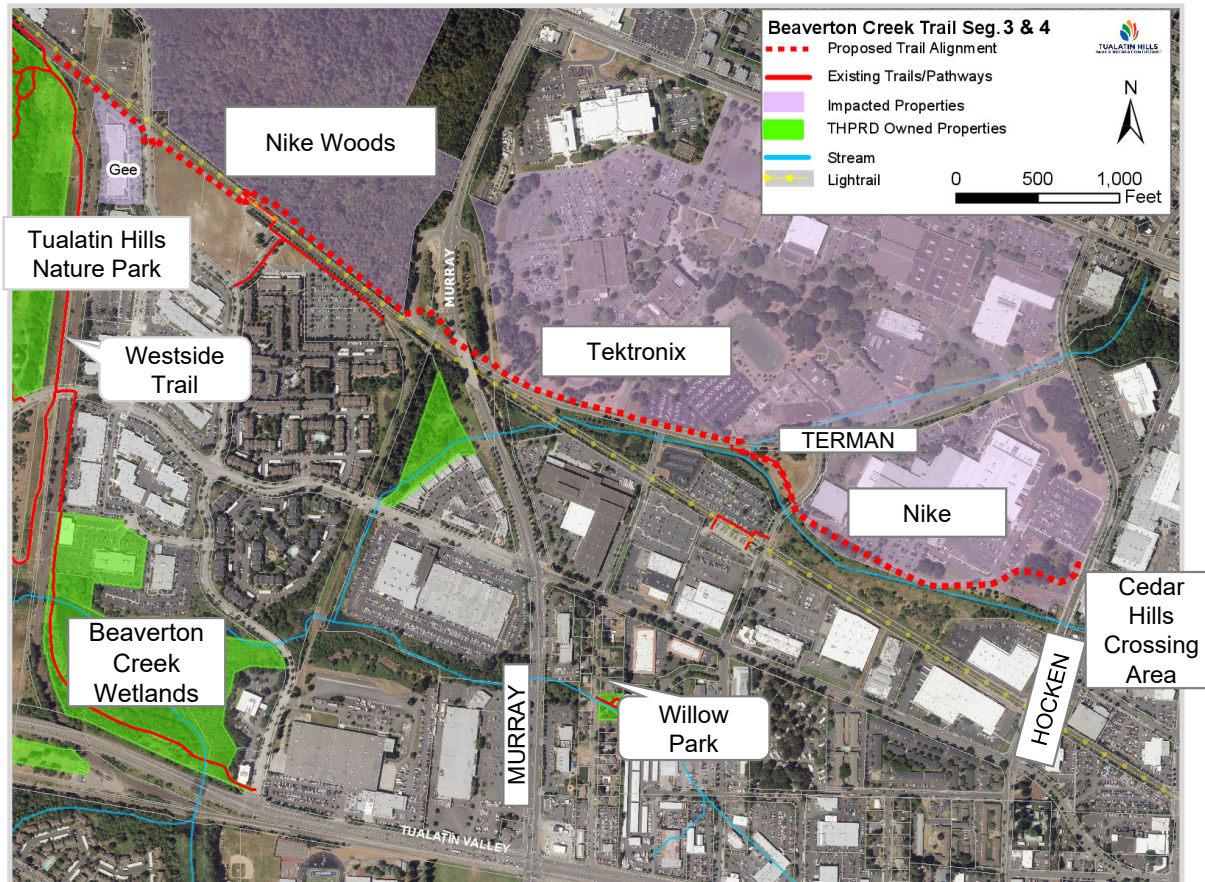
Beaverton Creek Trail
Segments #3 & 4



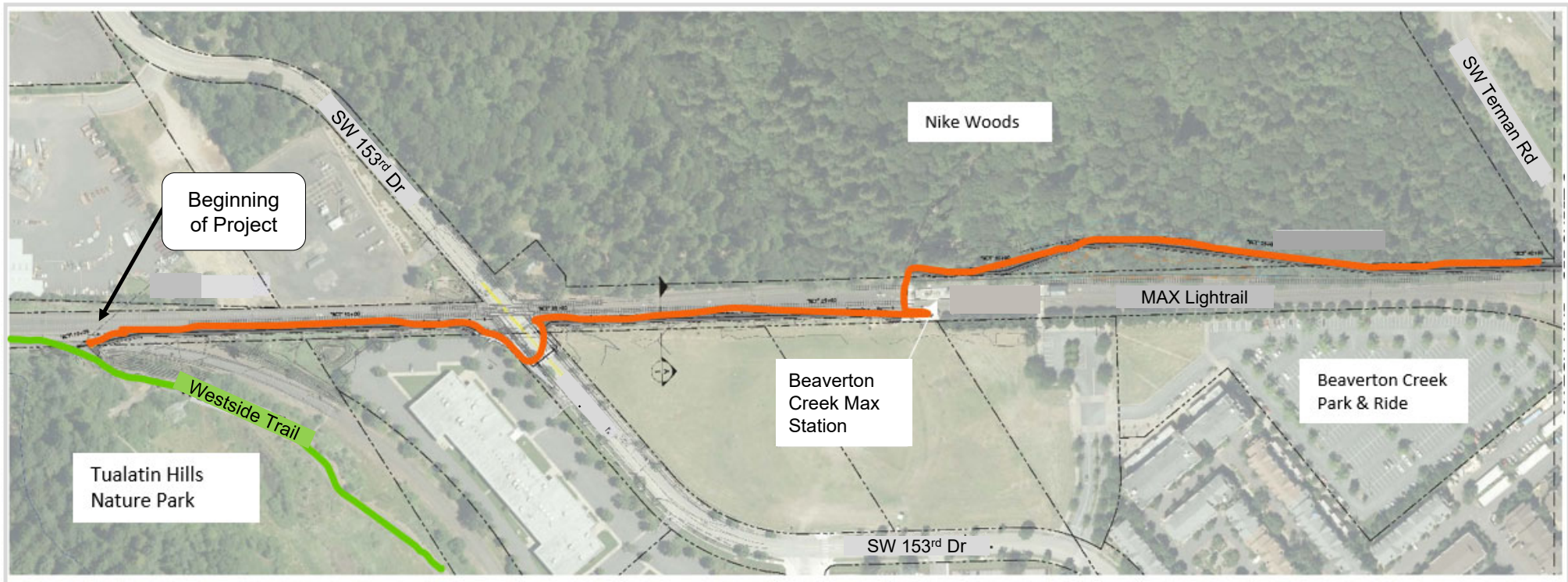
Vicinity Map



Site Map

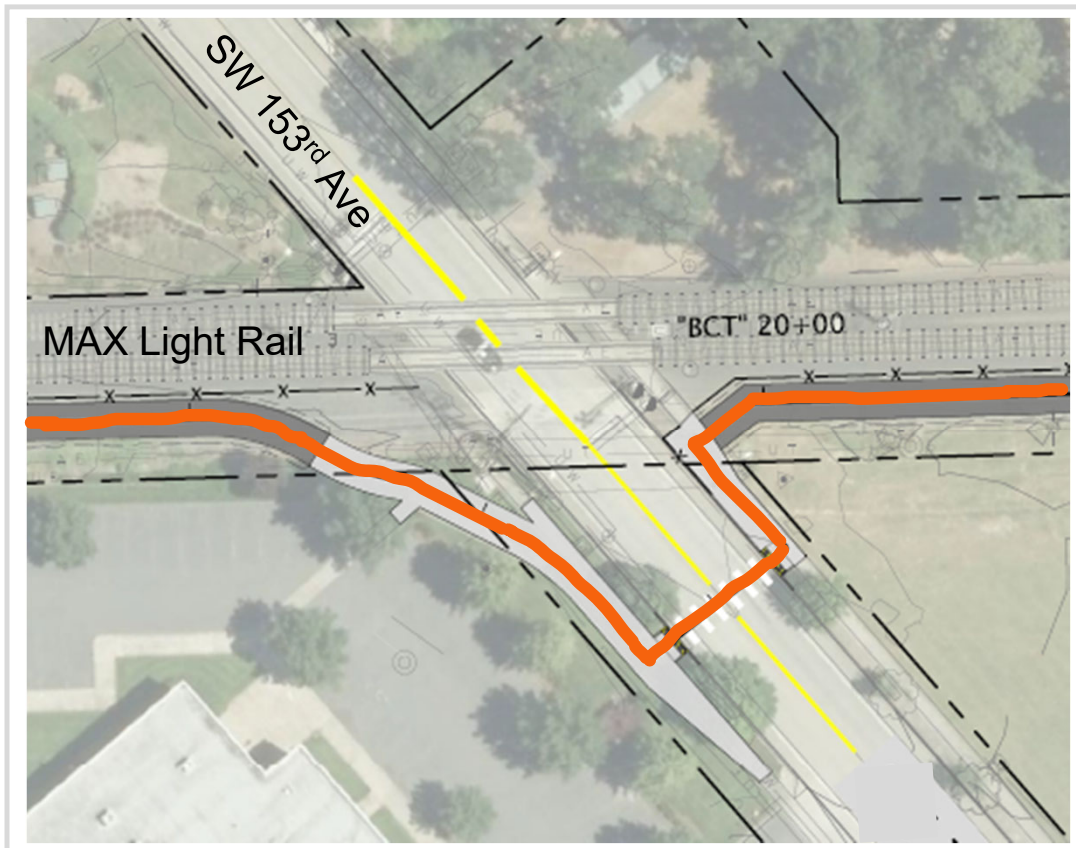


Preferred Concept Plan - Section 1



Beaverton Creek Trail Project

SW 153rd Ave Crossing Option



- Warning signs
- Possibly flashing lights as deemed necessary
- Reduce curb radius
- Anticipate lighting at all road crossings
- Directional fencing

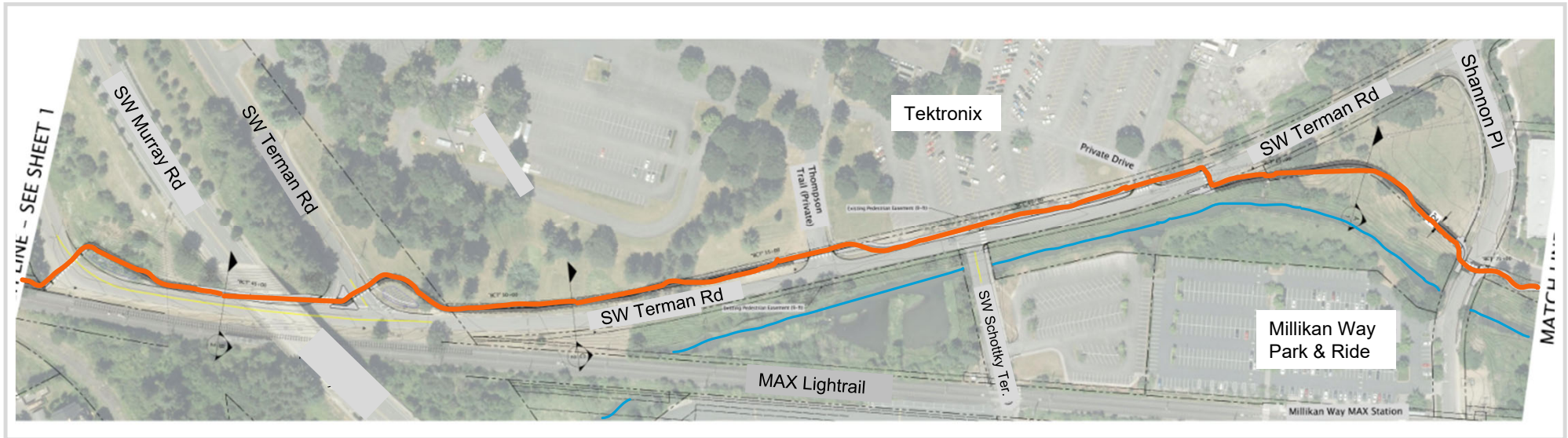
Looking West at 153rd Crossing



Looking West at Beaverton Creek Station



Preferred Concept Plan - Section 2



Beaverton Creek Trail Project

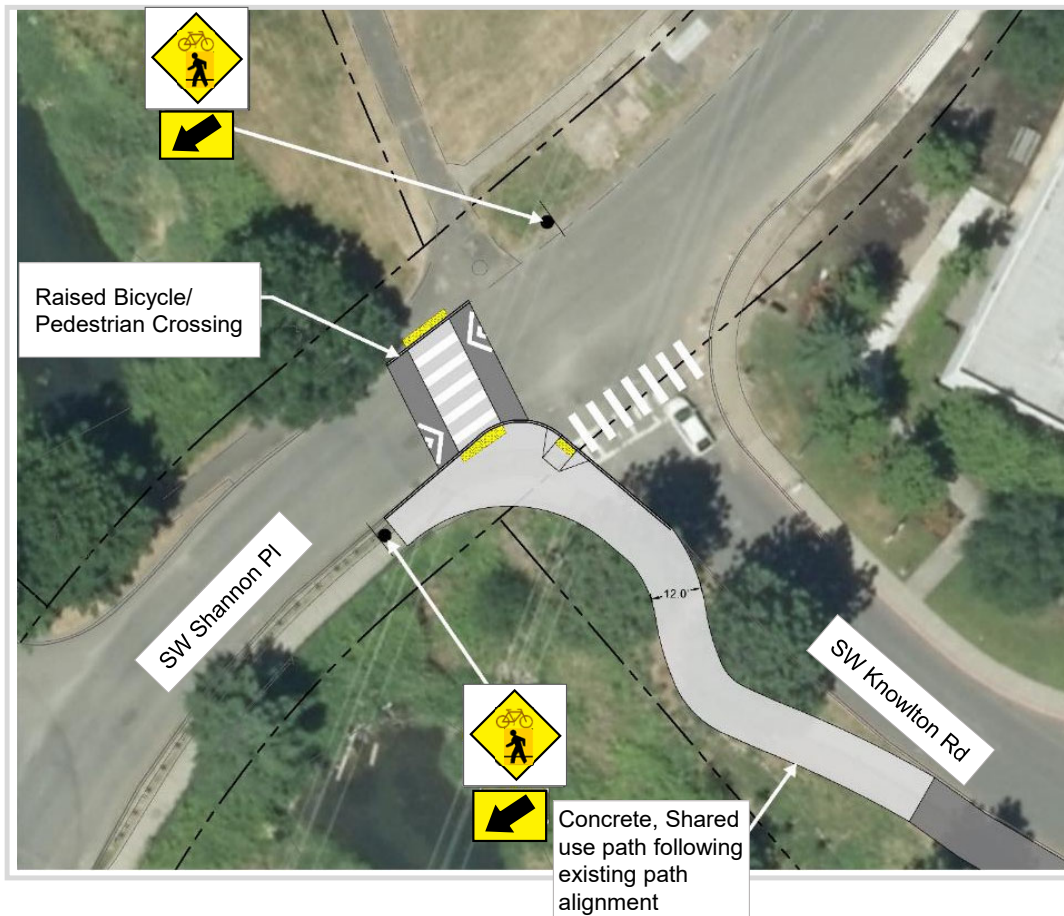
Looking East Toward Murray Underpass



Looking West From Shannon & Nike Entry

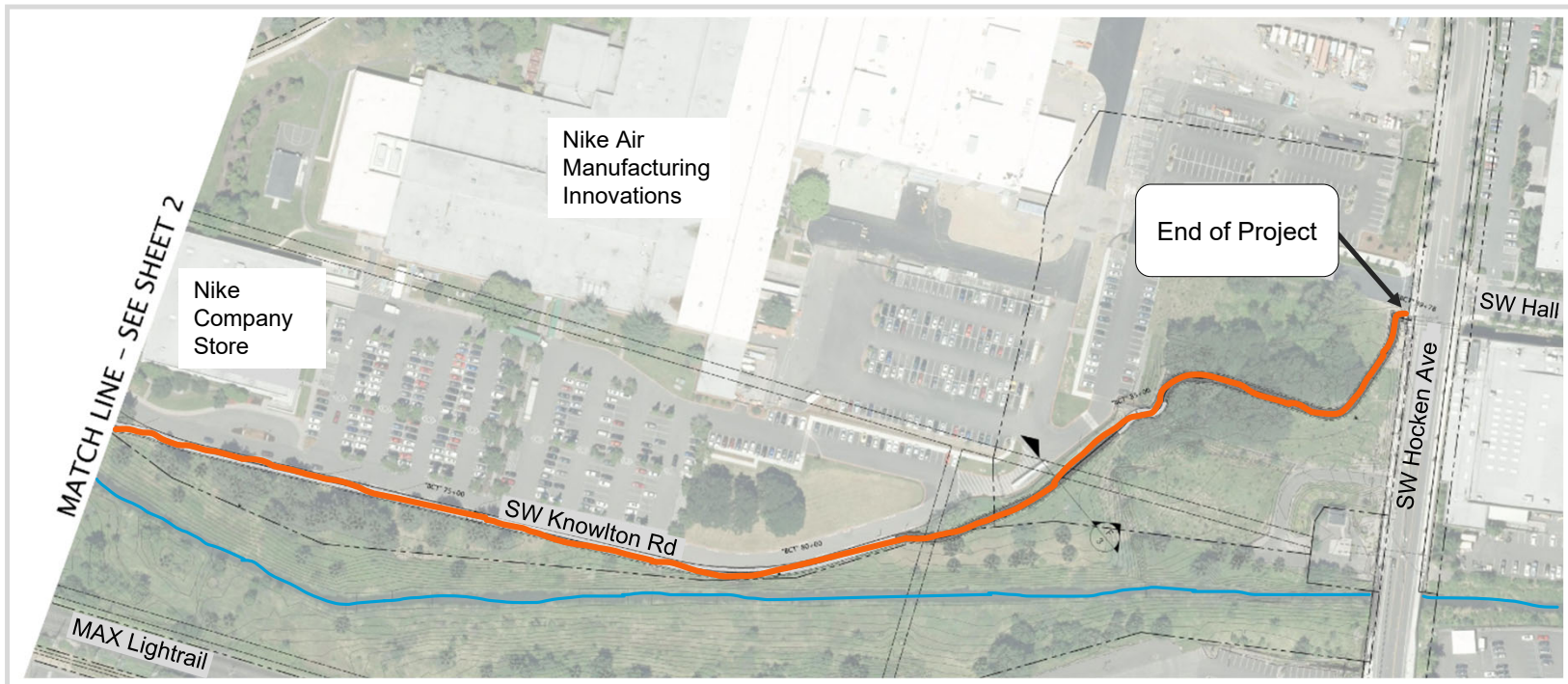


Shannon Place Intersection Improvements



- Raised crosswalk with striping
- Warning signs
- Possibly flashing lights as deemed necessary
- Reduce curb radius
- Anticipate lighting at all road crossings

Preferred Concept Plan - Section 3



Beaverton Creek Trail Project

Existing Trail at Hocken & Hall



Next Steps



Community Engagement - Winter / Spring 2021



Preferred Alternative Development - Summer 2021



Seek Additional Funding as needed: Potential Grants - RFFA, LWCF & Oregon Community Paths



Construction Documents & ROW – 2022 - 2024



Construction – 2025 - 2026



**Thank you for your time.
Questions / Comments?**