

Raleigh Park Concept Plan



November 2017 Final Draft

Acknowledgements

Tualatin Hills Park & Recreation District Board of Directors

Jerry Jones, Jr., President
Ali Kavianian, Secretary
Felicita Montebianco, Secretary Pro-Tempore
John Griffiths, Director
Holly Thompson, Director

Tualatin Hills Park & Recreation District Staff

Doug Menke, General Manager
Bruce Barbarasch, Superintendent of Natural Resources & Trails Management
Rene' Brucker, Park Planner
Crystal Durbecq, Natural Resources Specialist
Steve Gulgren, Senior Park Planner
Brian Leahy, Tennis Center Supervisor
Scott Wagner, Park Ranger
Roger Whitaker, Park Maintenance Coordinator
Heath Wright, Aquatic Center Supervisor

Table of Contents

| <u>Subject</u> | <u>Page</u> |
|-----------------------------|--------------------|
| Purpose of Concept Plan | 1 |
| Concept Plan Goals | 2 |
| Site Description | 3 |
| The Planning Process | 6 |
| The Concept Plan | 7 |
| Appendix of Public Meetings | 14 |

Purpose of Concept Plan

The Raleigh Park Concept Plan provides a long-term vision to guide how the 16.6 acre site is maintained and what amenities are installed or changed over time. It is different than a master plan in that some existing park amenities serve as anchors and are not being considered for significant changes. The concept plan identifies overall goals and objectives for the site and introduces supporting projects that will be refined and fully developed over time.

The plan will provide the neighborhood and community with the following benefits:

- Safe, accessible recreation opportunities
- A more stable and natural stream corridor
- Increased facilities for walking
- Opportunities for different types of recreation activities
- Enhanced aesthetics, including areas around the pool facility



Concept Plan Goals

The goals of the concept plan were derived from the park district's Comprehensive Plan, as well as related Parks, Programs, and Natural Resources functional plans. Input via patron concerns and interests helped bridge broad goals and practical outcomes.

The vision statement in the Comprehensive Plan states: *We will enhance healthy and active lifestyles while connecting more people to nature, parks, and programs. We will do this through stewardship of public resources, and by providing programs/spaces to fulfill unmet needs.*

Concept Plan Goals

1. Understand and respond to patron recreational needs.
2. Provide appropriate amenities that meet recreational needs, including accessibility.
3. Evaluate and refine current maintenance service level.
4. Adjust park features to be more environmentally and fiscally sustainable.

Recreation

- Provide opportunities for self-directed active recreational activities via revised facilities and the designation of an additional space for future active recreation needs.
- Foster passive recreation such as walking, jogging, and bird watching through the addition of loop paths.

Public Access

- Per THPRD's Americans with Disabilities Act Transition Plan, improve access and amenities so that all users have increased opportunities to use the site.
- Create seating or other quiet areas that allow contemplation and enjoyment of the park.
- Provide for safe use of the park. Maintain visibility along paths and structures for visibility.

Habitat Conservation

- Move and/or locate new recreational amenities in locations that protect natural resources.
- Use environmentally-friendly materials in construction or improvement of built amenities.
- Install native plants in steep, wet, or underutilized areas.

Water Management

- Improve stream bank stability and water quality through bank stabilization and vegetative shading of stream and wetlands.
- Minimize use of impervious surfaces. Where hard surfaces are necessary consider alternatives such as pervious pavement or boardwalk materials.
- Reduce flooding events at the pool and building through stream and water management.

Site Description

Site History

Prior to park use, the site and parts of the surrounding neighborhood were associated with a golf course. The land that is now Raleigh Park was acquired in 1962. The park exceeds 16 acres; approximately half of it is owned by the Beaverton School District. THPRD constructed the pool in a low spot in the park in the early 1960's, choosing to route the stream in a pipe under the pool deck itself, rather than around it. Amenities such as benches, tennis courts, and a play area were added to the park incrementally, but the park never had a formal master plan. The latest park improvements were a remodeled play area in 2011 and art installations in 2014. The play equipment was geared towards younger children since equipment for older children was available at Raleigh Park Elementary School.

A map showing existing amenities follows this section.

Park Type

The park district's Comprehensive Plan has designated Raleigh Park as a community park. A community park is a larger park (averaging 20 acres) that provides active and passive recreational opportunities for all park district residents within a three mile radius of neighborhoods around it. Community parks may accommodate large group activities, including facilities for organized recreational activities, and on-site parking.

Neighborhood Context

Raleigh Park encompasses two hillsides with a stream that runs in the low spot of the site. Terraced areas are on the west end. Mature trees flank the upper slopes, while grassy areas are prominent in the lower areas. The park is surrounded on the north and east sides by a low-density residential neighborhood, by an elementary school on the south side, and by homes and a privately-owned riparian forest to the west. There are five park access points and a 38-stall parking lot. Access to the school grounds is provided through the southeast and southwest corners of the park.

The census records from the neighborhood (97225 zip code) show that the median age of the community has been rising steadily from 40.5 years in 2011, to 41.4 in 2015 (the last year statistics were available). More specifically, the population of residents age 60 and greater has increased by 2.4% since 2011, while the percent of residents under age 18 has decreased by nearly two percent. School enrollment echoes this trend, with a decrease in enrollment of K-12 students from 3,462 in 2011 to 3,164 in 2015. Anecdotal evidence however, suggests that families with young children are starting to move into the neighborhood.

Existing Facilities and Paths

Raleigh Park currently provides passive recreation opportunities such as picnicking and walking, as well as facilities for active pursuits including three tennis courts, a horseshoe pit, and a two play areas (one with traditional play equipment, the other a sand and water zone) geared

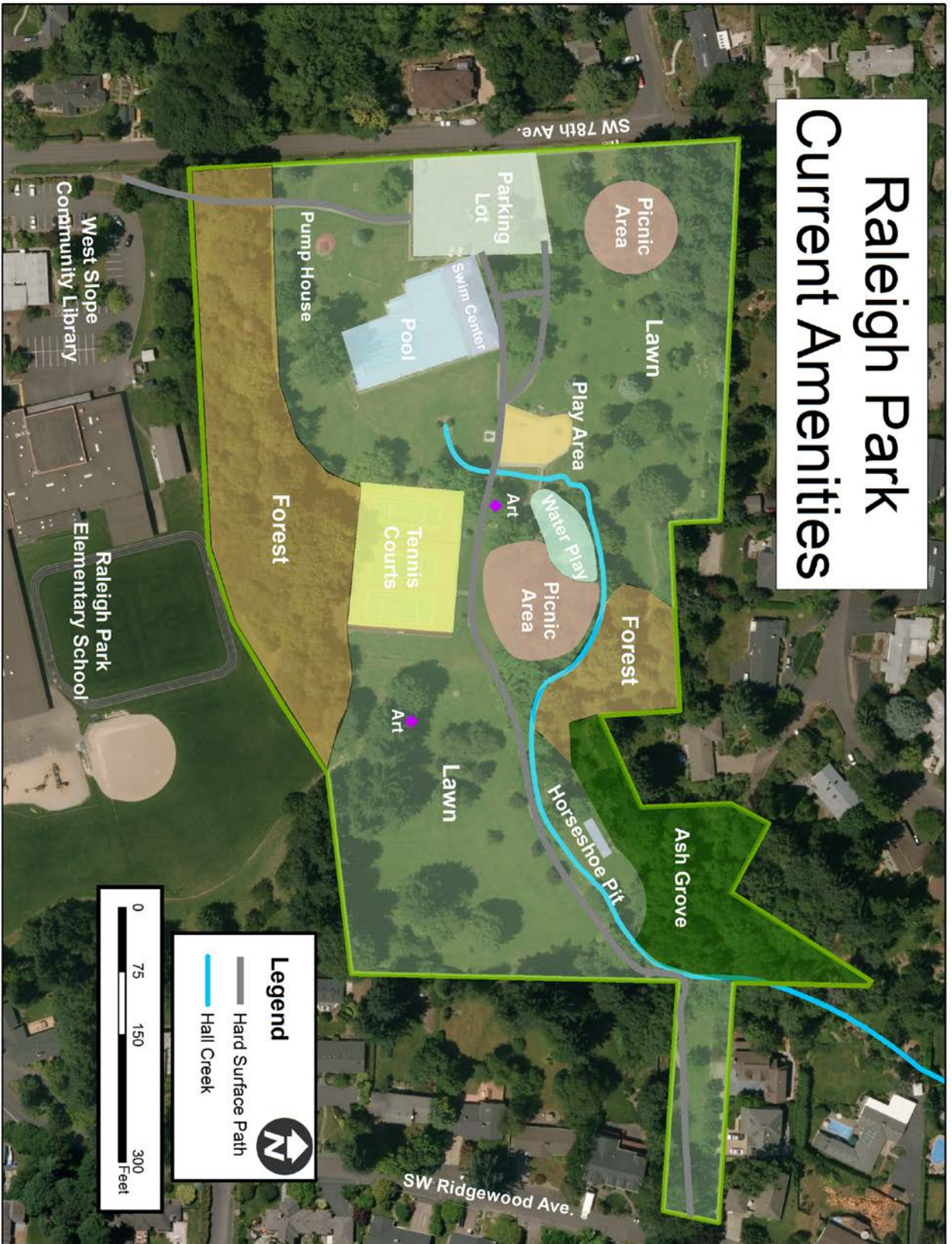
towards preschool and elementary school-aged children. Two stone art works by Adam Kuby explore the geology and geography of the area. A 1,250 foot paved path cuts diagonally across the park, allowing an east-west connection between SW 78th and SW Ridgewood Avenues. Another paved path on the southwest side of the park is steep and connects the parking lot to the school and library. Both are accessible year round. Many walkers and students on their way to school use the paths. Much of the grassy area of the park is inaccessible during the rainy season due to saturated soils, especially near the entrance off of SW Miner Way. There is a pool building with locker rooms, restrooms, and a six-lane, 25-yard outdoor pool that is operated in the summer only.

Natural Resources

Hall Creek, a perennial tributary of Beaverton Creek, is the primary natural resource in the park. It runs for approximately 980 feet and during typical flows is less than six-inches deep, and approximately 12 to 36 inches wide. Native Oregon ash trees provide some shading of the creek, but little other vegetation is present on the banks except for grass. THPRD staff mow the grass to the edge of the stream banks. The banks of the creek are incised and eroding in some locations and are in need of stabilization to protect park assets such as the paved path.

Portions of the site are classified as wetland, although none have been maintained as such. The area in the NE portion of the park informally known as the Ash Grove is a wetland that is mowed seasonally when the soils have dried enough to allow equipment into the park. The trees are in decline due to age and have been losing branches during storms. Dead or dying trees like these have great value for wildlife and are retained if they do not pose a hazard to park users.

Raleigh Park Current Amenities



The Planning Process

Overview of Workshops and Presentations

Because Raleigh Park is a well-established and much used park, acquiring input from its users and nearby residents was crucial to the development of a concept plan. Staff took an active and non-traditional approach to public involvement by seeking out comments in the park instead of relying solely on formal public meetings. The goal was to gather information from a variety of park users and community groups. Public input was sought through a combination of mailers, intercept surveys, public notices on websites, flyers, and via open houses. Appendix 1 has meeting summaries which staff referenced in writing this plan.

Public presentations and THPRD Board meetings were held to discuss the plan as follows:

| | |
|---|-----------|
| Intercept surveys in park | Fall 2016 |
| Scoping public meeting | 11/30/16 |
| Refinement public meeting | 05/23/17 |
| Board meeting overview | 8/15/17 |
| Final concept public open house | 9/27/17 |
| Revisions | Fall 2017 |
| Anticipated final board presentation, public comment | 12/9/17 |

The Concept Plan

Overall Description of Concept Plan

The concept plan represents the contributions of many individuals and groups including community stakeholders, park neighbors and users, as well as the THPRD Board of Directors and staff. A concept plan map follows this section. Funding for items in the concept plan are currently unfunded. When grants, resources, or funds are acquired, the following changes will be implemented. As of fall 2017, funding is anticipated only for pool-related changes.

1. *Walking Paths.* In order to provide more walking opportunities, a loop path system composed primarily of soft-surface paths was designed. It is intended for foot traffic, but strollers, bicycles may use it respectfully.
 - a. Existing hard-surface paths will remain. As they are in need of repaving, adjustments may be made to decrease cross slope, reduce downhill slope, and move paths farther from the stream, where these modifications can be done without impacting recreational activities.
 - b. Where feasible, drainage improvements will be made to keep the paths drier during the rainy season. Other drainage improvements, including a seat wall to deflect water, are desired on the north side of the pool building.
 - c. A paved path extension will connect the north-south path along SW 78th Ave. with the east-west path in the center of the park, near the pool building.
 - d. Soft-surface paths will be added in select areas around the perimeter of the park to create walking loops and connections to different parts of the neighborhood. Criteria for placement of a soft-surface path include appropriate slope, drier soil conditions, and useful connections. Soft-surface paths will be four feet wide where site conditions allow; otherwise, three feet will be the minimum width. Path surfaces will be hard-packed mineral soil or packed gravel, depending on soil conditions. Small boardwalks or bridges may be needed once final designs are completed.
 - e. Path lighting is not recommended at this time, but this issue may be revisited depending on future needs.

Example of soft-surface path.



2. *Future Recreation Amenity.* To meet the future recreation needs of the community, a roughly 5,000 square foot area will be designated for a potential recreation amenity. Further study of demographics and community desires are needed to determine what, if any, amenity would best serve the community. The amenity could be a bocce court, play area, or an amenity suggested in the district's Emerging Sports Action Plan, such as a skate spot. Should the amenity be a play area, consideration should be given to adding equipment suitable for older elementary aged children and even teenagers, such as climbing boulders.
3. *Pool Enhancements.*
 - a. The pool deck has reached the end of its useful lifespan and is anticipated to be rebuilt in fall 2018. A concrete curb or seat wall will wrap around the east and south sides. The pipe which carries the stream under the deck will be repaired, replaced, or relocated. Staff will evaluate options that balance ecological and financial benefits. In the event that the stream is rerouted to a new channel around the pool in the future, the pipe will serve as an overflow mechanism to reduce pool flooding.
 - b. A seat wall and other drainage improvements will be investigated to lessen the flow of water towards the front (north) side of the building.
 - c. A new welded wire safety fence will be installed around the pool. It will lessen the ability of unauthorized people to access the pool and be more aesthetically pleasing than the existing chain link/barbed wire fence.
4. *Stream Enhancements.* Hall Creek runs through the center of the park and is subject to high water flows during rain events due to stormwater runoff. The stream will receive several enhancements to improve its ecological condition:
 - a. Native herbs, shrubs, and trees will be installed along select areas of the stream and surrounding areas totaling approximately 50,000 square feet. Patrons are encouraged to stay on paths, but due to multiple requests made by patrons for access, people may walk through replanted areas as long as they are not causing noticeable damage. Existing wetland areas that are currently mowed may be transformed into natural areas managed for native plants and animals. Extensive plantings will replace the wet, grassy area south of Miner Way. The horseshoe pit will be permanently removed. Picnic tables or benches will be added along the trail through the Ash Grove.
 - b. To protect plantings and keep park users away from steep banks, a split-rail fence will be installed to separate the picnic area from the creek.
 - c. Logs, woody plants, and rocks will be placed in or near the stream bed in the northeast section of the park to reduce erosion and protect developed amenities like the walking path.
 - d. Pending the outcome of a feasibility study, the creek may be re-routed to a new channel around the south side of the pool. If a new channel is excavated, the surrounding area of approximately 32,000 square feet would be replanted with native trees and shrubs, keeping a mowed strip for access and visibility around the pool.

Current conditions near picnic area.



Simulation of stream restoration near picnic area.



5. *Forest Restoration.* The hillside between the school and pool has a variety of native and non-native invasive plants. Invasive plants such as English ivy will be removed. Non-invasive, ornamental trees may be allowed to remain in low numbers, but will not be replaced as they die of natural causes. The forested area will be replanted with native shrubs and trees, over an area of approximately 52,000 square feet. Patrons are encouraged to stay on paths,

but due to multiple requests made by patrons for access, people may walk through replanted areas as long as they are not causing noticeable damage.

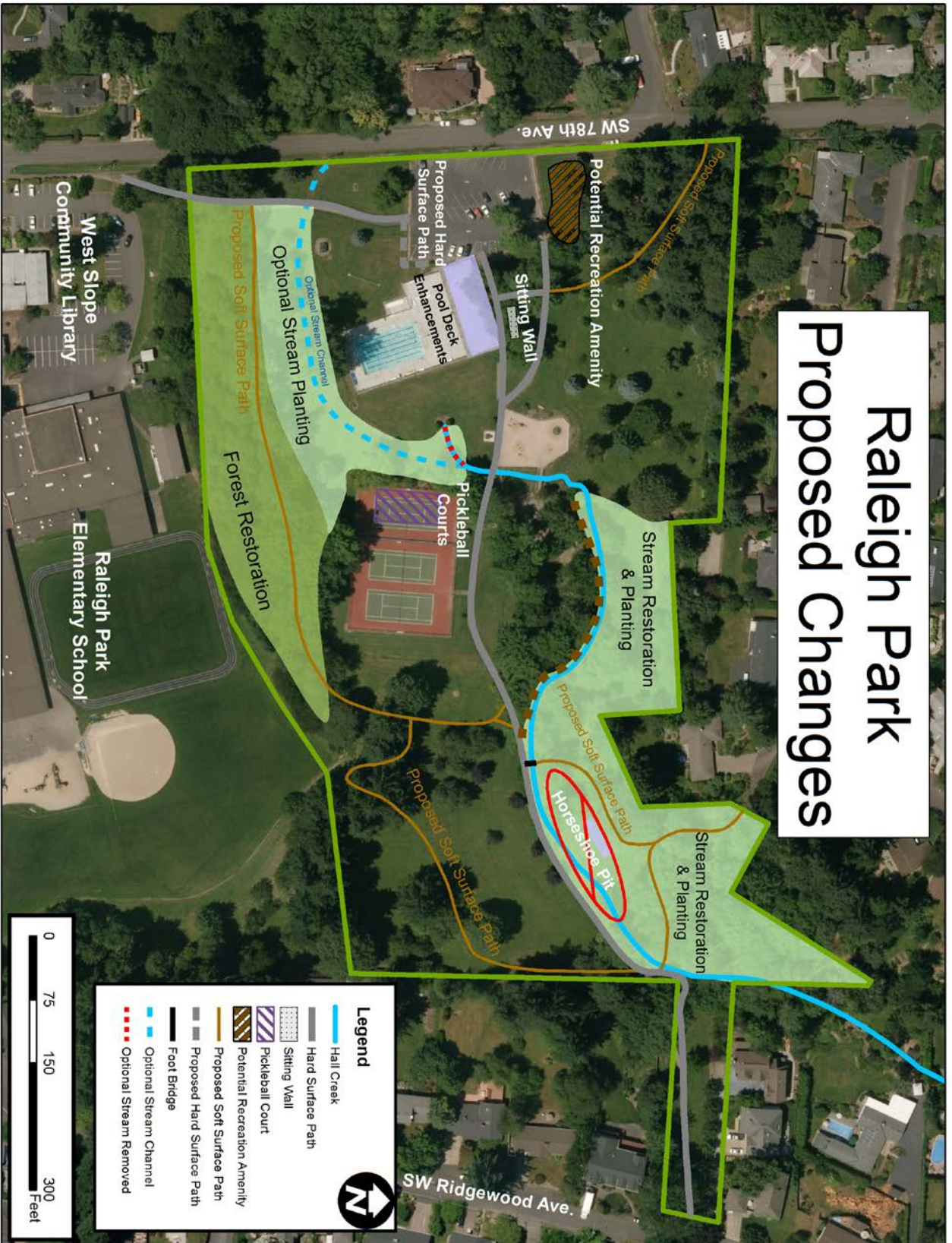
6. *Landscape Areas.* The central, grassy areas of the park will continue to receive standard mowing, trash, and maintenance services. Ornamental trees will continue to be maintained. Apple trees are starting to reach the end of their lifespans and are failing. Staff will replant edible apples on a limited basis and other hearty, non-invasive ornamental trees to maintain a mix of shade and sunny areas. Native trees will be used when suitable. In order to protect park assets, trees within 30 feet of the tennis courts will not be replaced at the end of their lifespan.
7. *Accessibility Improvements.*
 - a. Benches will be added along paths to provide space for patrons to rest and enjoy views of the park. Select benches along paved paths will include access options for people experiencing disability.
 - b. Pavement extensions will be made to improve access to the main picnic area near the tennis courts. Additional paved access to picnic tables will be made adjacent to the pool building.
 - c. Improvements will be made to reduce path slopes and cross slopes.
 - d. A detailed description of small-scale park improvements and modifications to the pool building are noted in THPRD's Americans with Disabilities Act Transition Plan.
8. *Horseshoe Pit.* The horseshoe pit will be permanently removed. It may be relocated to the Future Recreation Amenity Area.
9. *Pump House.* A small concrete building (located southwest of the pool) houses a pump once used for irrigation. The pump is still functional, but is no longer being used. When the building reaches the end of its useful lifespan, it will be evaluated for removal or downsizing.
10. *Tennis Courts.* The two courts in the easternmost portion of the park will remain as-is. The single court to the west will be restriped to become a multi-use court for a pilot period, with a minimum of two pickleball courts striped onto the same surface as the tennis court lines. Users will need to bring their own nets and paddles. Nets may be available to borrow seasonally from the pool building. Park managers may specify specific hours or days of use for tennis or pickleball. If the pilot project is successful, the court will be permanently striped and nets added to provide for multiple pickleball courts.

Cost Estimate

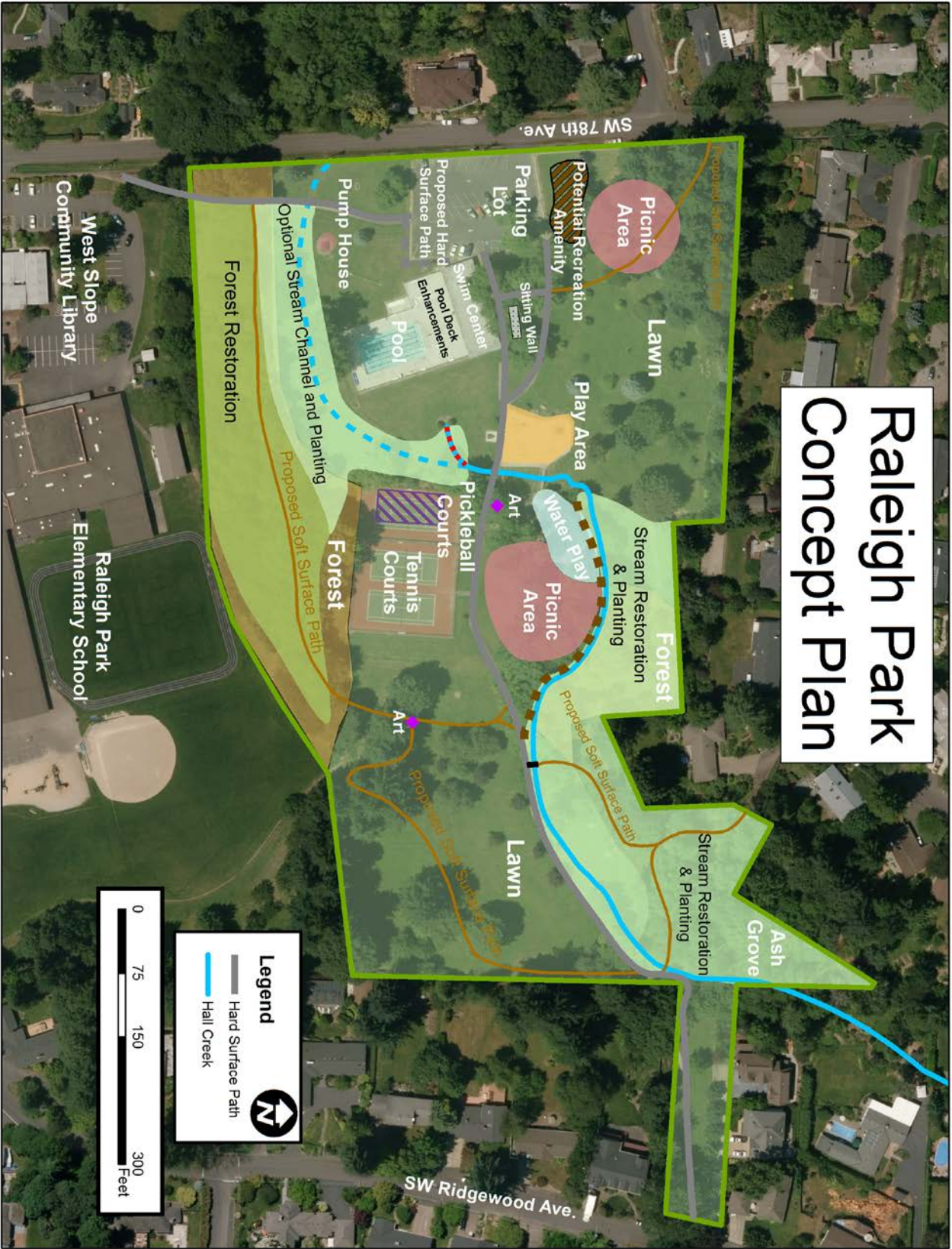
Changes are expected to be implemented in phases over time, as funds are available. Each phase will require the development of more detailed designs to determine needs and actual costs and will cover:

- Engineering
- Permitting
- Demolition
- Materials
- Construction/Labor
- Contingency

Raleigh Park Proposed Changes

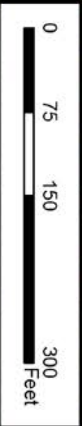


Raleigh Park Concept Plan



Legend

- Hard Surface Path
- Hall Creek



Appendix of Public Meetings

The following documents can be found in this section:

- Raleigh Park Open House Summary 1 – 11/30/16
- Raleigh Park Open House Summary 2 – 5/23/17
- Raleigh Park Open House Summary 3 – 9/27/17



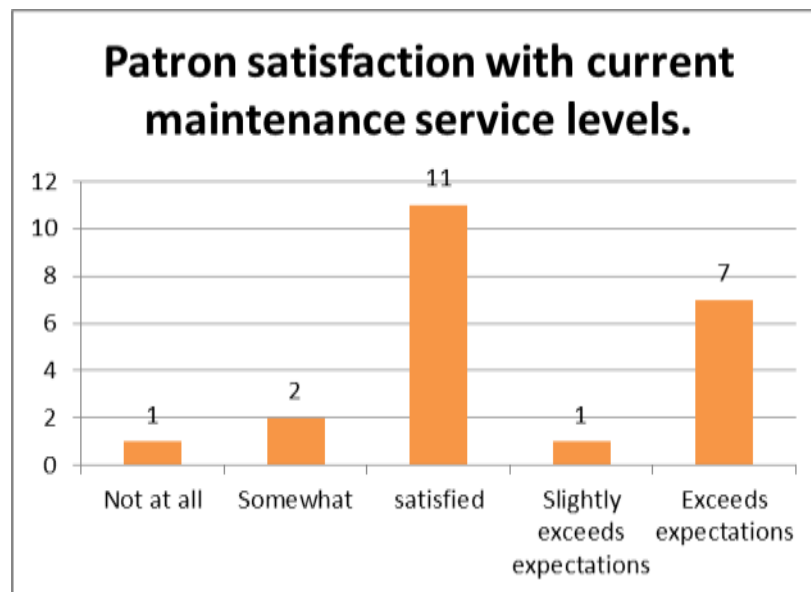
Raleigh Park Open House Summary (11/30/16)

Approximately 40 community members participated in an open house meeting about Raleigh Park on 11/30/16. During the meeting, patrons rotated through four comment stations (Park Maintenance, Park Usage and Changes, Pros and Cons, Nature) to help staff understand how they currently use the park, what they most appreciate about it, and what they would like to change. The comments below are arranged thematically.

Content summary:

- People generally like the park/pool as-is and feel that the level of service meets or exceeds expectations. All existing amenities are well-used by patrons.
- The pool is valued by the community. Several people would like to see a longer season.
- Dogs were a source of strong feelings; some disliked dogs off leash, while others were strongly in favor of letting their dogs off leash/creating an off-leash area.
- Paths are the most commonly used feature. A desire was expressed for soft surface trails- perhaps around the perimeter.
- There was a perception that the hilly edges of the park are a natural area.
- A majority of patrons were encouraging of planting additional vegetation along the stream.

Park Maintenance Summary: *Comments in this section relate to daily maintenance activities and changes that can be made as part of standard operations. A majority of patrons were satisfied with the services currently offered.*



Most repeated comments (no specific order):

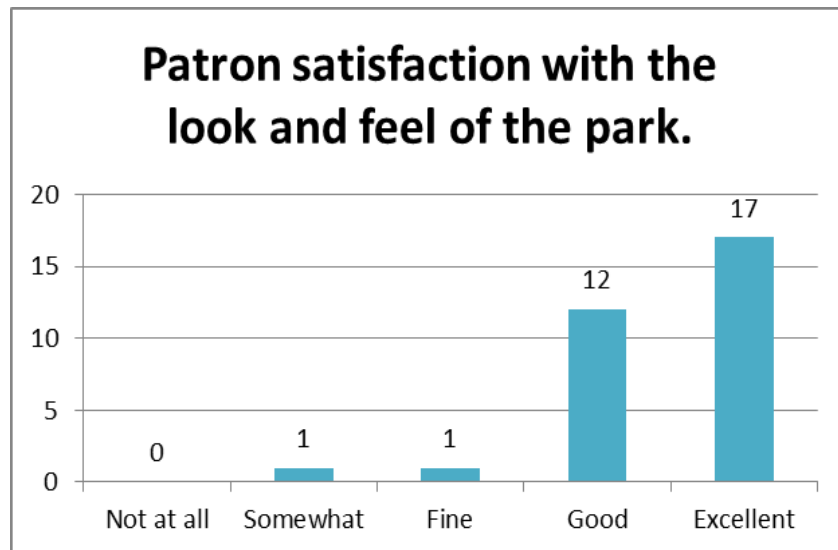
- A dog off leash area is desired. Maybe in the upper terrace or along the north slope.
- Enforcement of dog on leash rules is desired- especially before 9am. Two people reported being bitten in the past.
- Sand pit is great.

- Raise/repair the bridge near ash grove.
- Add more picnic tables in NW picnic area. Create flat spots for picnic tables.

General comments:

- Too much driving on wet grass, creates mess. Would like less mowing on wet soil.
- Limit mowing and leaf blowing.
- Do not use herbicide in the park.
- Take out or trim dead dangerous tree limbs/trees.
- Path to school is sometimes slippery with moss/leaves. Path is too steep and rough. It floods near pool. A railing on the steep part would help seniors.
- Prune apple trees so they can be picked. They go to waste on the ground now.
- Sand pit is too messy and attracts cats.
- Clean graffiti off tree uphill from tennis courts.
- The staff is very pleasant to work with- very responsive Thank you all!
- Homeless people are rare in the park, though one person believes there is an encampment on the south slope near tennis courts.

Park Usage & Changes Summary. *Conversations and mapping exercises showed that virtually all areas of the park are used regularly. Many patrons stated that they liked or “loved” the park the way it is and that no changes were desired. A number of suggestions for minor changes or amenity additions were made.*



Most repeated comments about desired change (no specific order):

- Walking is a favorite activity among most users and several comments were made to support the experience:
 - Soft surface path around the perimeter.
 - More lights along path.
 - Build trail from Miner Way to the bridge/main path.
 - Construct a sidewalk from the park to the school.
- Add apple trees on the hill where some have fallen.
- Like/need to keep an open area for sledding near apple tree.

- Install benches along path (for seniors).
- Remove horseshoe pit. Rarely if ever used.

General comments about desired changes:

- More sun around picnic area.
- Add a community garden (possibly on the hill south of pool).
- Add disc golf around edges of park.
- Add a giant chess set near NW picnic area.
- Build a covered play area.
- Add a large modern ropes/climbing structure. See Lea McKeighan Park as a reference.
- Better children's playground- especially for older kids.
- Like concerts.
- More family concerts.
- Add bocce court.
- Add three to four exercise stations along the path.
- Acquire house near parking lot to use as community center with a coffee shop, kitchen, and ability to do things like wedding receptions, reunions, etc. Similar to Laurelhurst Club across the street from Laurelhurst Park in Portland.

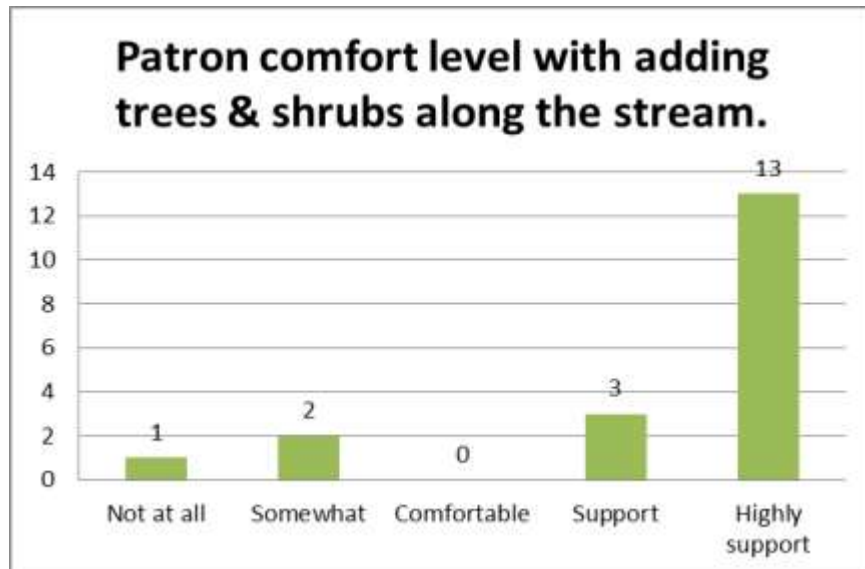
General park usage comments:

- I like the park art, natural areas, and creek.
- Love balance of sun/shade.

Pool-specific comments. *Patrons who commented like and use the pool and wanted to see it open longer.*

- Keep pool open longer: March through November (or at least May – September)
- Cover the pool for year round usage.
- Don't cover the pool.
- More activities at the pool.
- Add a splash pad.
- Add a fitness/weight room.
- Add more lap swimming times.
- More shade in the pool area, I miss the cottonwoods.
- No trees near the pool- mess and problem to pool.

Nature Specific Summary. *Based on a voting exercise, a majority of people consider slopes of the park- especially ash grove to be a natural area. There was also a strong desire to vegetate the banks of the creek.*



Most repeated comments about desired change (no specific order):

- Maintain big trees in vicinity of NW picnic area. Area is much used.
- The park needs to be cleared of ivy and excess brush (blackberries, English hawthorn).

General nature comments:

- Turn ash grove into natural area.
- Do not spend money to craft a wetland area in ash grove.
- Can you work with school on pollinator habitat? Especially near soccer field.
- Please do not increase paved areas or developed areas. Give up the fight with water and get as close as possible to the natural forces.
- Patrons identified many wet spots around park- none were a surprise to staff.

Next Steps

1. Review most repeated comments as they received more community input than others.
2. Investigate feasibility and magnitude of desire for changes. Convene community for input depending on scale of proposed changes.
3. Determine which basic maintenance requests can be implemented immediately and which may be phased in over time.



Raleigh Park Open House #2 Summary (5/23/17)

Nearly 50 community members participated in an open house meeting about Raleigh Park on 5/23/17. During the meeting, staff presented concepts for changes to the park based on feedback heard during the November 2016 open house. Patrons rotated through four stations (Stream Enhancement, Pool Improvements, Tennis Courts, Trails). The comments below are arranged thematically.

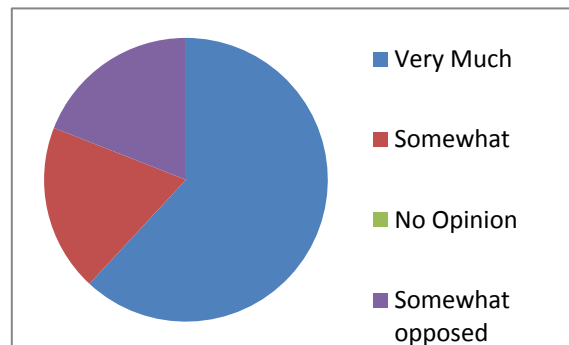
Content summary:

- Many people wanted to see enhancements to the stream corridor, but some had concerns about the loss of grassy areas or places to walk due to proposed vegetation planting.
- Participants supported the new pool deck and perimeter fence.
- There was a high level of interest in creating a pickle ball court on the single tennis court.
- Expansion of the trail system was strongly supported.

Stream Enhancement Summary

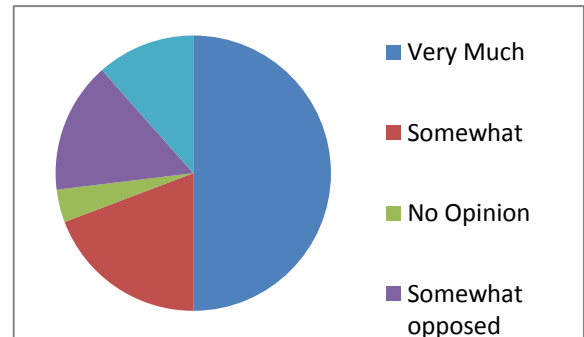
Based on a voting exercise, conversations, and written comments, there is a desire among a majority of participants to revegetate much of the stream corridor. The proposal includes “daylighting” the creek by moving it to a new channel that wraps around the south side of the pool, instead of running it through a pipe under the pool. Several patrons expressed interest in allowing people, especially children, to walk through any revegetated areas. THPRD staff are comfortable with people accessing replanted areas as long as damage is kept to a minimum.

| To what degree do you support stream enhancements and rerouting in the three proposed locations? | | | | |
|---|----------|------------|------------------|--------------|
| Very Much | Somewhat | No Opinion | Somewhat opposed | Very opposed |
| 26 | 8 | 0 | 8 | 0 |



The ash grove area near SW Miner Way is a wetland area that has been seasonally mowed for recreation. Use of the area is light since it is wet for most of the year. The area currently has a horseshoe pit that is seldom used and sometimes has picnic benches. Patrons generally favor restoring this area to a natural space with improved trail access and benches.

| How much do you support changing the Ash Grove into a natural area with just a trail? (Includes removing benches and horse shoe pits) | | | | |
|--|----------|------------|------------------|--------------|
| Very Much | Somewhat | No Opinion | Somewhat opposed | Very opposed |
| 13 | 5 | 1 | 4 | 3 |



Representative Stream-Specific Comments:

- Love the look but concerned about the limitations for children to enjoy and explore the creek (N edge of picnic and south edge of ash grove) where there is constant activity during summer months. South edge of pool area doesn't seem to attract as much activity.
- If south edge of pool gets planted, we should have the alternate south trail. If no south trail (between pool and school), I would definitely contest the planting. The area behind the pool and tennis courts are primary off-trail walking areas and well-used by all.
- Kids love the creek, it would be a shame to block any part of the creek. I know the park is rented out to kids groups during the summer and those groups should be consulted.
- Worried about hard and bare riparian areas - glad to see plantings.
- The more natural the better.

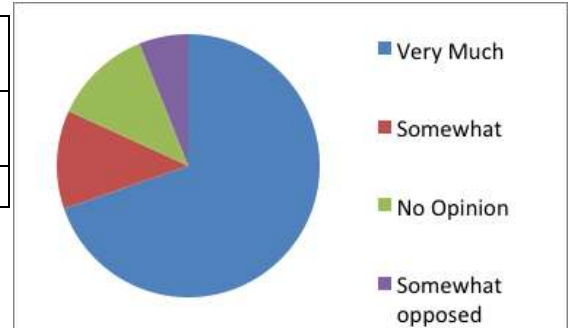
Pool Specific Summary

Improvements to the pool include a new pool deck, a curb or seat wall along the east and south edges, and a new fence design. This station was informational, but received only positive comments. The curb or seat wall would help to keep water and debris from entering the pool and could provide seating for pool users. Enhancements to the pool are planned for fall 2018, but could change depending on the timing of plan development and permit acquisition.

Tennis/Pickleball Summary

Pickleball is a racquet game, similar to tennis, but played on a smaller court with a different net. Patrons supported the idea of transforming the single tennis court into a pickleball court or overlaying pickle ball lines onto it so we could offer both tennis and pickleball, if nets were changed out.

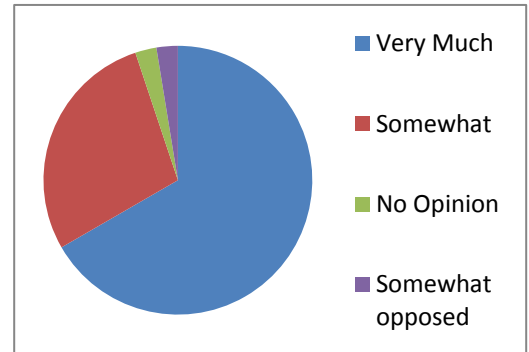
| To what degree do you support the change of a tennis court to a pickleball court? | | | | |
|---|----------|------------|------------------|--------------|
| Very Much | Somewhat | No Opinion | Somewhat opposed | Very opposed |
| 23 | 4 | 4 | 2 | 0 |



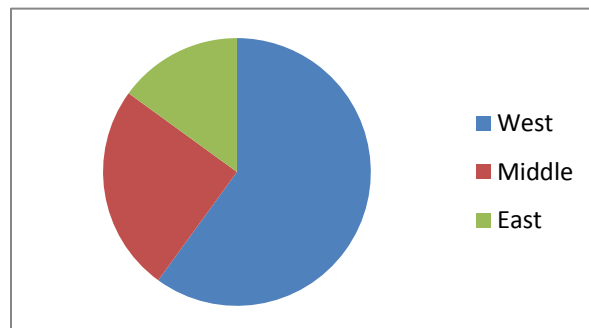
Trail System Summary

Staff presented a proposed soft-surface loop trail system which was widely supported by patrons. Park users who enter through the SW Miner Way entrance preferred that enhancements were made to create a westerly trail that connects with the existing bridge (which will eventually be improved or replaced).

| How much do you support the new park-wide trail system? | | | | |
|---|----------|------------|------------------|--------------|
| Very Much | Somewhat | No Opinion | Somewhat opposed | Very opposed |
| 26 | 11 | 1 | 1 | 0 |



| Which of the three Ash Grove trails would you be most likely to use? | | |
|--|--------|------|
| West | Middle | East |
| 12 | 5 | 3 |



Representative Trail-Specific Comments:

- I would like to see a perimeter trail/path around the whole park, including North side - N middle park N of stream.
- Leave area for walking around perimeter - don't plant to the edge of the park - N middle park N of stream.
- Nature Play area - N middle park N of stream.

General Park Comments:

- Off-leash dogs still a concern
- Please do something about the wet and slippery areas on the slope below the apple trees and to the north of the footbridge.
- Please restore the wetlands. I'd like more bike parking, less car parking, more natural space. Flooded homes, roads, and basements downstream is not cool. Change status quo.
- An impromptu discussion led to an interest list for a bocce court. Fourteen people found this amenity favorable.

Next Steps

1. Refine trail plan to incorporate natural areas SW Miner Way entrance. Evaluate trail routing in areas where patrons expressed drainage concerns. Determine if a trail along the north side of the park is feasible.
2. Decide whether whole court pickle ball or dual court option is best for lower tennis court.
3. Refine stream and forest enhancement planting plans. Determine if or how patrons can access these areas safely.
4. Evaluate general park amenity requests including more bicycle parking, a bocce court, and play equipment for older children.
5. Review current park management in regard to dogs on/off leash.



Raleigh Park Open House #3 Summary (9/27/17)

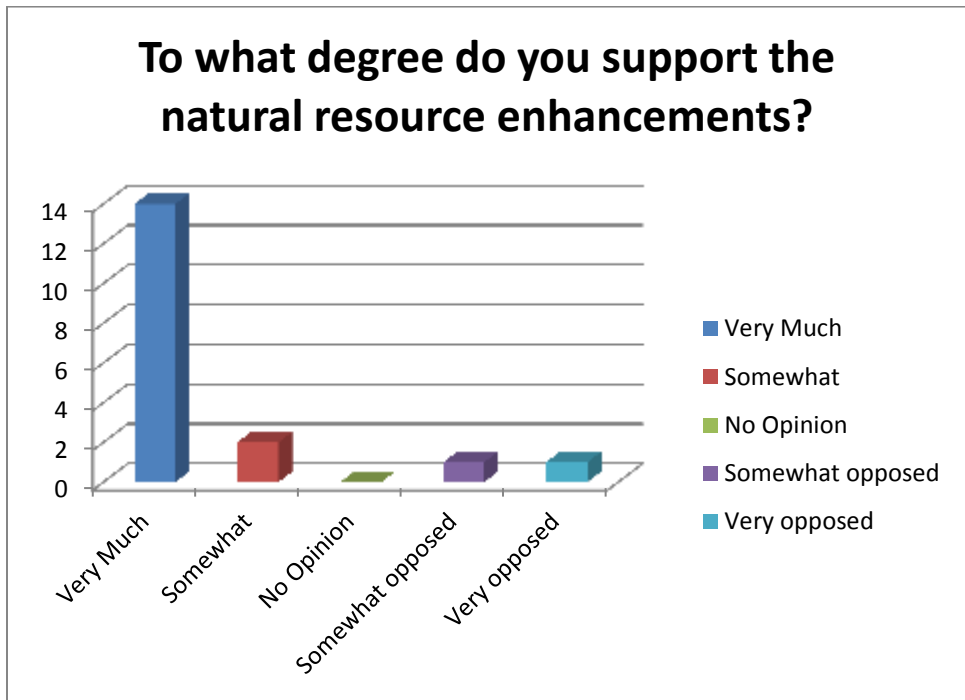
Nearly 35 community members participated in an open house meeting about the draft Raleigh Park concept plan on 9/27/17. During the meeting, staff presented a final draft of the plan. Patrons rotated through four stations (overview, stream/forest enhancement, trails, and recreation, which included the tennis courts and future recreation amenities). The comments below are arranged thematically.

Content summary:

- There continued to be a high interest in natural resource enhancements, providing they were well maintained.
- A majority of patrons supported the new trail system, but a few questioned the need and impact.
- Pickleball was still a desired feature. Many patrons would like to see a shared use court.
- Additional recreation amenities were of interest to the community, but further study on the best location and item should be studied further.
- Continuing to plant apple trees was desired by many patrons, though others consider them messy and cause maintenance challenges.

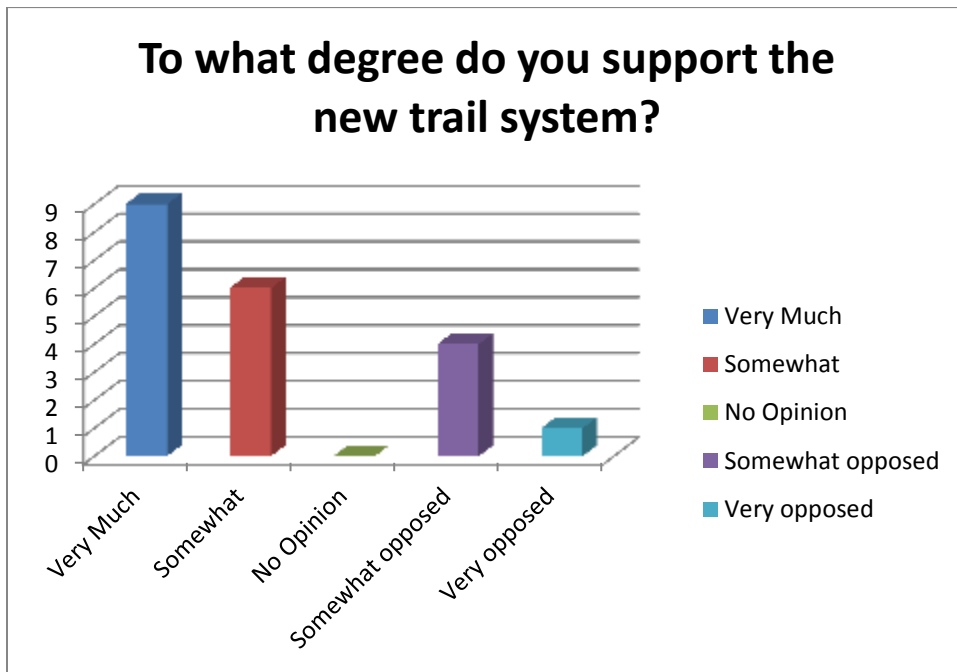
Natural Resource Comments:

- Weed removal, followed by planting of native trees, shrubs, and forbs was widely supported.
- Several patrons noted that they expect THPRD to provide ongoing maintenance to these areas so it looks “kept up.”
- If the ash grove is planted with natives, open sight lines are desired for safety.
- Two picnic tables were requested to be left in an open area along the ash grove trail.
- People still have a desire to walk through the forested areas, even if additional plants are installed.



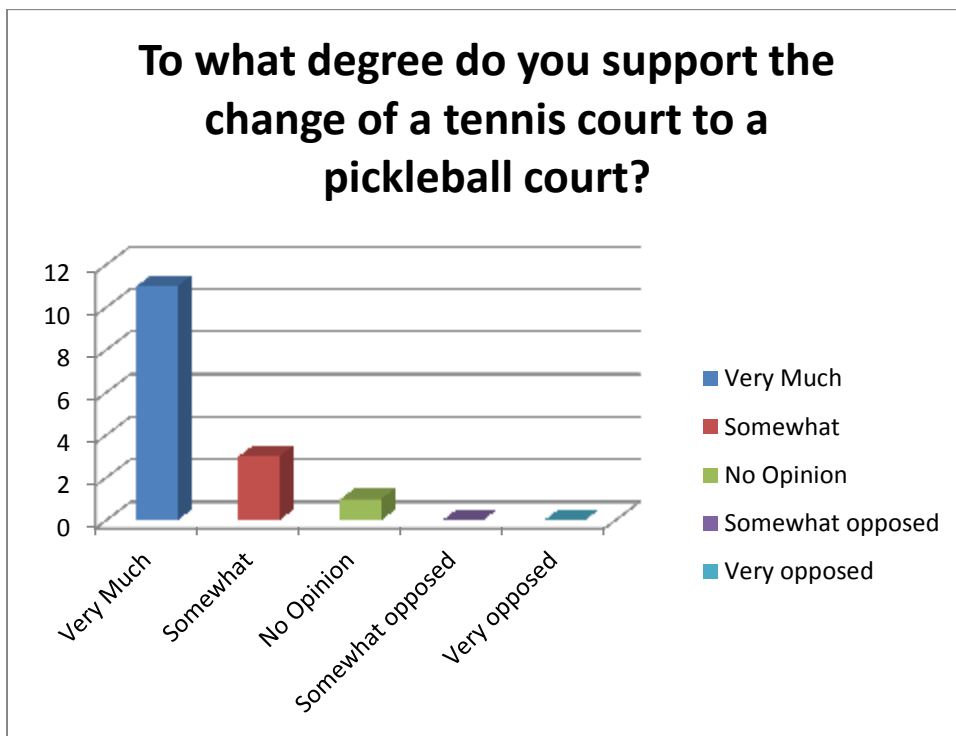
Trail Comments:

- Overall, the trail proposal was well received.
- Because many people use the park as a neighborhood connector, lighting was requested along the paved trail.
- One patron was concerned that the trail would disturb wildlife in the forested areas.
- Comments were received that the trails on the north side should extend all the way to the west. Other people requested that the trails remain where they are proposed and do not stretch out further.
- A question was raised about whether neighbors who reside near the new trails were informed of the trail proposal.
- Two patrons questioned whether trails were needed at all since people can walk wherever they want now.



Recreation Comments:

- Patrons appreciated new and existing opportunities for recreation in the park.
- Pickleball courts were widely supported. Many people prefer a dual use court that would support tennis and pickleball.
- Two people asked why the pool is not covered and used year-round.
- Several requests were made to add play equipment for older children (ages 7-12 in particular) and teens.
- The potential future recreation area noted on the map is very wet. Consider moving it up hill or to the northwest.
 - Requests for future amenities included: skate park, basketball court, volleyball court, bocce, covered picnic area, swings for people experiencing disabilities, adult fitness stations.



General Park Comments:

- Many comments were received about apple trees.
 - Some patrons wanted to see trees maintained at a high enough level that fruit could be harvested easily.
 - Others requested that the trees are just replanted with other species as they die.